



3/2 WAY DIRECTIONAL VALVES KVC

- NG 4
- Up to 160 bar [2 320 PSI]
- Up to 16 L/min [4.2 GPM]
- Plug-in connector for solenoids to ISO 4400.
- Optimized flow paths for low losses of pressure.
- Wet pin solenoid with interchangeable coil.
- Manual emergency control.
- Protection of solenoid IP 65 to EN 60529 / IEC 60529.
- Fulfil EMC (89/336/EEC).



KVC2-3/2-47B, KVC-3/2-47B

Features

Hydraulic		
Size		4
Flow rate	L/min [GPM]	16 [4.2]
Operating pressure	bar [PSI]	160 [2 320]
Viscosity range	mm ² /s [SUS]	15 to 380 [69.5 to 1 760]
Oil temperature range	°C [°F]	-20 to +70 [-4 to 158]
Filtration	ISO 4406-1999	19/17/14
Mass	KVC-3/2-4	1,6 [3.5]
	KVC2-3/2-4	3,5 [7.7]

Electrical		
Supply voltage	V	12, 24
Power	W	29*
Switch-on time**	ms	50 to 80
Switch-off time**	ms	30 to 55
Switching frequency	1/h	15 000
Ambient temperature	°C [°F]	to 50 [122]
Coil temperature	°C [°F]	to 180 [356]
Duty cycle		Continuous

* 12 V supply voltage - 36 W.

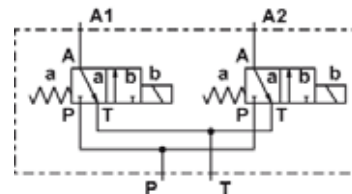
** The switching-on and off times apply to 24 V DC solenoids.

Hydraulic symbol

Single: KVC-3/2-4-47B



Double: KVC2-3/2-4-47B



Mechanically operated

Hydraulically operated

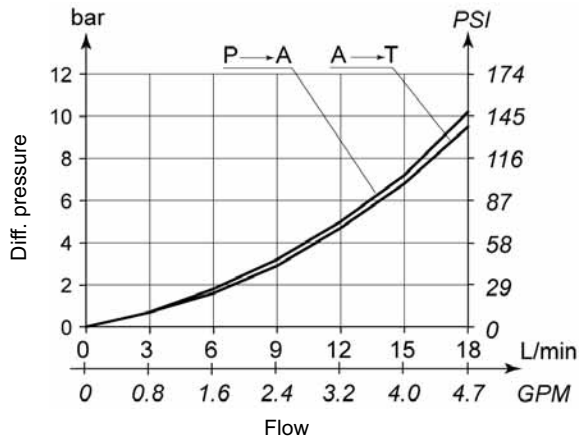
Electrically operated



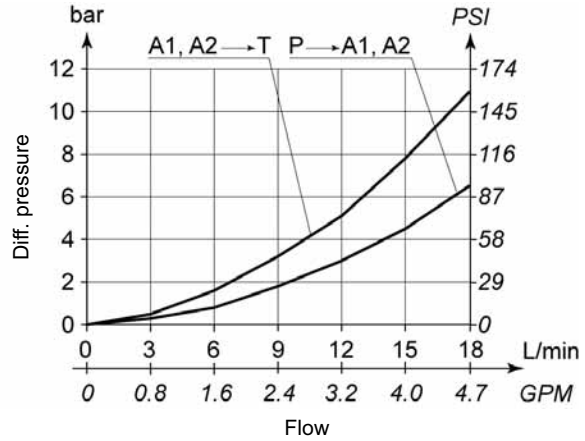
ΔP-Q Performance curves

Measured at 50°C [122°F] and viscosity of 32 mm²/s [148 SUS].

KVC-3/2-4

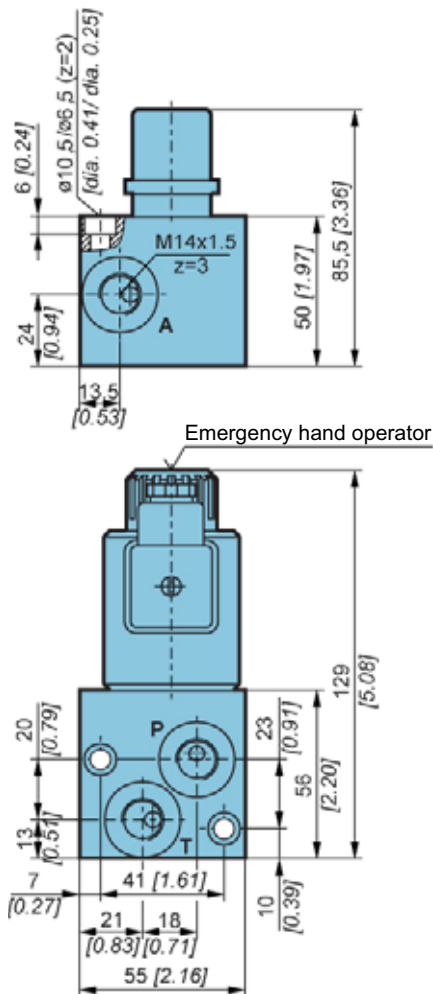


KVC2-3/2-4

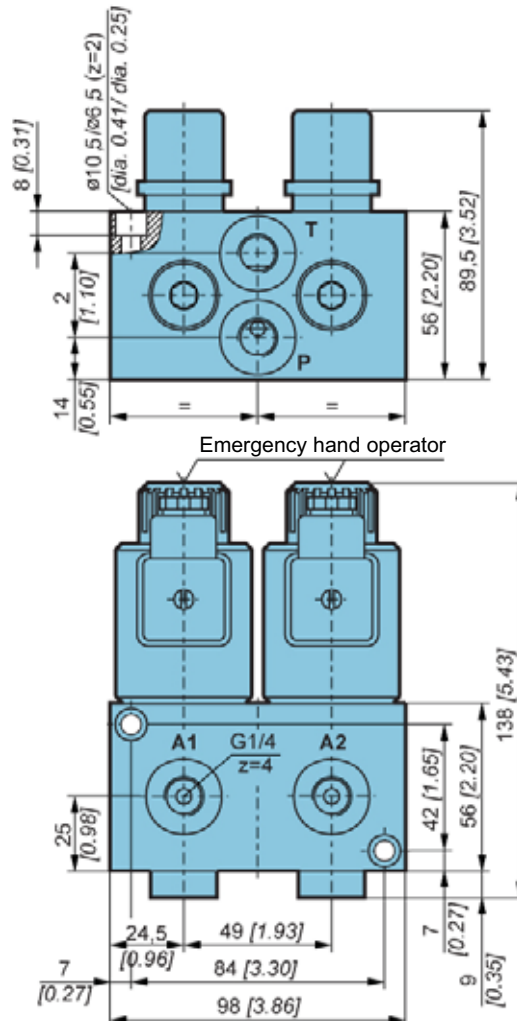


Dimensions

KVC-3/2-4-47B

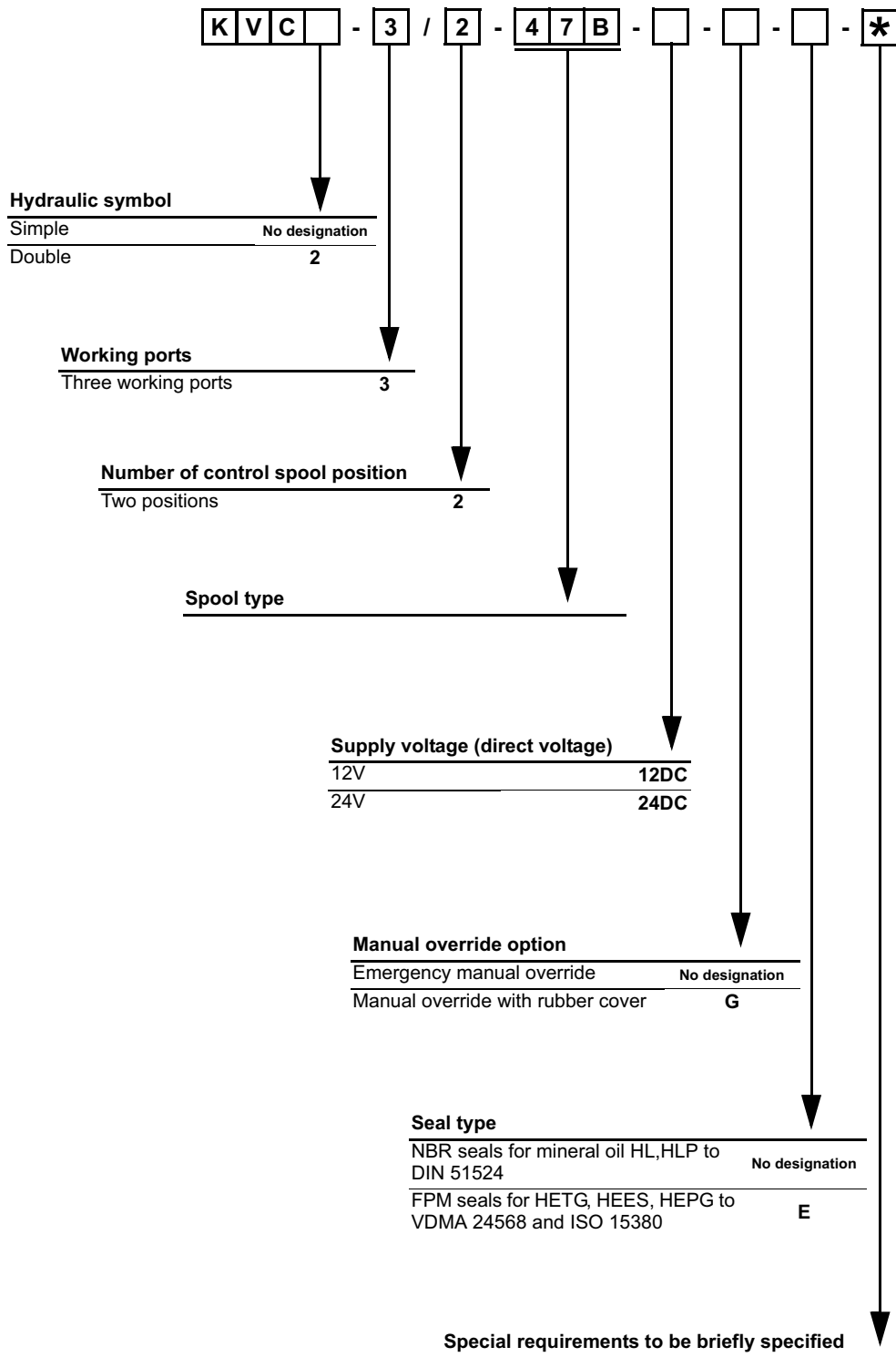


KVC2-3/2-4-47B





Model code



Mechanically operated

Hydraulically operated

Electrically operated

